

# MANAGEMENT INFORMATION SYSTEMS

INDUSTRY SOFTWARE FROM SISTRADE



# THE COMPANY



SISTRADE - Software Consulting, S.A. is an information systems company with know-how in software development and consulting service for different activity areas, including industry companies. SISTRADE main goal is to offer the market the best information systems tools, in order to help SISTRADE customers to improve performance in all the critical business processes.

## QUALITY CERTIFIED COMPANY

SISTRADE is very concerned about these issues, so SISTRADE is certified in the standard NP 4457:2007. With the implementation of the standard, it was possible to systematize the processes of innovation, research and business development. Since its founding, SISTRADE has participated in research projects with many entities of the national scientific system, looking for synergies arising from the exchange of knowledge between academia and business.

SISTRADE is certified in ISO 9001: 2008. The guidance to the quality of products and services to customers, has led the company to implement this standard, always aiming at increasing customer satisfaction as well as working on the path of continuous improvement.

## PARTNER

Since its founding, SISTRADE sought to establish partnership with various entities whenever the company believes that there is a potential synergy, therefore SISTRADE keeps its doors open to strategic partners that can bring a breath of fresh air to technological development.



## WHERE WE ARE

### SISTRADE PORTO

R. Manuel Pinto de Azevedo, nº 64B  
4100-320 Porto, Portugal  
☎ +351 226 153 600  
✉ +351 226 153 699  
porto@sistrade.com

### SISTRADE LISBON

Av. António Augusto Aguiar 148, 4C  
1050-021 Lisbon, Portugal  
☎ +351 213 805 082  
lisboa@sistrade.com

### SISTRADE MADRID

Ribera del Loira, 46-B 2, Planta 0  
28042 Madrid, Spain  
☎ +34 915 030 083  
madrid@sistrade.com

### SISTRADE PARIS

57, rue d'Amsterdam,  
75008 Paris, France  
☎ +33 181 504 506  
paris@sistrade.com

### SISTRADE MILAN

Viale Abruzzi, 13/A  
20131 Milan, Italy  
☎ +39 029 542 053 76  
milan@sistrade.com

### SISTRADE WARSAW

Al. Niepodleglosci 69,  
02-626 Warsaw  
☎ +48 606 744 996  
warsaw@sistrade.com

### SISTRADE LJUBLJANA

Rozna dolina, Cesta II/29,  
1000 Ljubljana, Slovenia  
☎ +386 40 646 753  
ljubljan@sistrade.com

### SISTRADE ISTANBUL

Buyukdere Caddesi, Levent N.193  
Binasi K:2, 34394, Istanbul, Turkey  
☎ +90 212 371 47 29  
istanbul@sistrade.com

### SISTRADE FRANKFURT

Platz der Einheit 1  
60327 Frankfurt am Main, Germany  
☎ +49 (0)69 97503 419  
frankfurt@sistrade.com

### SISTRADE ABU DHABI

Al Hilal Bank Building - Falah Street,  
PO Box 129 354, Abu Dhabi, UAE  
☎ +971 (0) 249 30297  
abudhabi@sistrade.com

### SISTRADE MEXICO CITY

Av. Insurgentes Sur #1898, piso 12  
Colonia Florida C.P. 01020  
Distrito Federal, Mexico City, Mexico  
☎ +52 (55) 9171 1156  
mexicocity@sistrade.com

## OUR TEAM

SISTRADE has a business process consulting team that adds value and helps in developing innovative solutions, mainly web based, for SISTRADE customers. The knowledge in technology and in business process, gives the customers global solutions with real and great value for their business.

## COMPANY VALUES AND CULTURE

At SISTRADE, as an information technology company, the contact with the most recent and up-to-date technologies is constant, and there is no difference, at a technological level, between managers and the remaining staff. Thanks to the operational proximity between human resources, the transmission of company values is multi-directional. Values, such as innovation, help and team spirit, clearly influence the company organization and functioning.

## OUR MISSION

SISTRADE seeks to establish partnership relations with the customers, in order to obtain concrete results, innovate and add value through joint decisions in ever more competitive electronic market. The company emphasizes a business growth by using innovative technologies, totally satisfying our customers and fulfilling and valuing our staff. These aspects will become added value for our customers, for our human resources and for our shareholders.

# TECHNOLOGY

## Sistrade® ERP ON A TABLET

All Sistrade® features are available on a Tablet! It's simple, but at the same time powerful. From estimates, to deliveries, you can plan the activities, CRM, manage materials, invoice and many other features of the ERP or MIS Sistrade using a simple Tablet! It's so simple and easy to use. That's why you will love it!

## COMPLETE ERP

Sistrade® covers all the enterprise requirements. Accounting, general ledger, payroll, commercial management, manufacturing, material and supplier management, CRM, Business Intelligence, scheduling and other key features of ERP or MIS.



## CROSS-PLATFORM

All Sistrade® features are available on PC / MAC / Tablet/ Windows / iOS / Android. It is simple but at the same time powerful. From estimates, to deliveries, the user can plan the activities, CRM, manage materials, invoice and many other features of MIS|ERP Sistrade® using different platforms.

## LATEST TECHNOLOGY

All Sistrade® solutions use Microsoft SQL Server support database. It is a relational database which optimizes IT environments, as it provides a safe and reliable platform for data analysis and management. SQL Server delivers fundamental technological advances in terms of information repository for collaborative users and adds value to the organizations.



## CLOUD COMPUTING

Sistrade® is 100% web based. Stop buying software licenses, servers, put an end to maintenance problems. Use it through the Internet in Cloud. Sistrade is available in private and public Cloud solutions.

## WEB APPLICATION

Sistrade® MIS | ERP solution is a web-oriented application, it allows accessing information from anywhere in the world as long as there is an Internet connection and a browser. Software licensing is made per company and per server basis which means that regarding users, the access is unlimited. This way, the organization can record, without limits, the users that will access the application.

## MULTILANGUAGE SOFTWARE

Sistrade® available in several languages simultaneously, what allows printing industry companies to sell their product in various countries.





## COMMERCIAL MANAGEMENT & ESTIMATING

- Offer management
- Dynamic price table
- Order management
- Multiple delivery plans by order
- Multiple delivery addresses
- Invoicing to different entities
- Customer invoicing management
- Handling agent commissions
- Handling vendor commissions
- Sending direct email, with message file in database
- Possibility to attach files, such as the customer order
- Shipping management and control
- Assisted issuing of delivery notes

## FINANCIAL MANAGEMENT

- Customer and supplier invoicing management
- Handling agent commissions
- Handling vendor commissions
- Collection management
- Receivable and payable accounts
- Payment delays
- Expiration alerts
- Bank management
- Control of cheques and bills
- General and analytical accounting





# SOLUTIONS

## HUMAN RESOURCE MANAGEMENT

- Employee register management
- Absences, overtime and holiday management
- Salary processing
- Salary payment
- Salary simulation
- Expenses and contract management
- Recruitment and selection management
- Management of consultations and medical examinations
- Performance and evaluation management
- Issue of mandatory legal reports
- Issue of internal reports for company management

## FIXED ASSETS MANAGEMENT

- Automatic amortization management
- Direct integration with accounting
- Revaluations
- Reinvestments
- Individual sheet of assets
- List of assets
- Amortization statement
- Depreciations
- Revaluations
- Alienations, write-offs, allocations, repairs

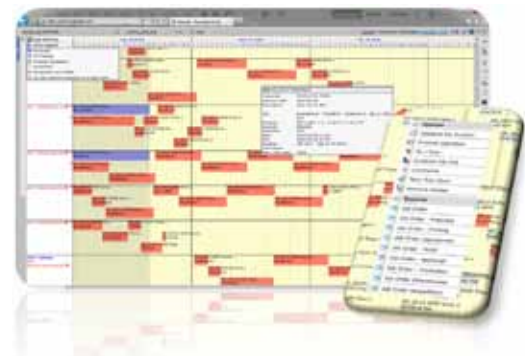
## STOCKS & PURCHASE MANAGEMENT

- MRP - Material Requirements Planning
- Interactive management of suppliers
- Definition of dynamic price lists by article rules and supplier
- Registration of requests by accredited users and authorization by the service responsible
- Create internal requests through the selection of authorized order
- Prepare and issue purchase orders, in order to satisfy the previously authorized internal requests
- Supply contract management
- Issue of warehouse entry and return notes, and delivery notes
- Subcontracting management
- Inventory with information on stocks, purchases, consumption and stock adjustment
- Clearance of material cost by section, production stage
- Scheduled delivery list, material for delivery
- Safety stock alert, reorder point
- End of the year inventory and stock regularization
- Location management
- Multiple warehouse management
- Requests of subcontracting from orders
- Registration and control of supplier invoices



## PRODUCTION MANAGEMENT

- Organize production methods
- Plan and control various manufacturing stages
- Track orders in production
- Schedule deliveries and enter materials in stock
- Clear production costs
- Analyse efficiencies by line, section, machine and employee
- Reduce production costs
- Plan production
- Simulate production planning
- Production control
- Production cost
- Update production time



## SCHEDULING

- Assisted production simulation
- Operation or activity planning
- Real-time indexing of the start and end of production
- Load analysis and resource availability
- View in Gantt chart
- Operations status identification using colors
- Drag & Drop of operations

# SOLUTIONS

## MES - SCADA & SHOP FLOOR CONTROL

- Easy definition of the plant layout
- Parametrization of the resources to supervise
- Free definition of the displayed information by resource
- Monitoring of a synoptic panel with status of each resource/machine in real time
- Parametrization of alarm types
- Real-time indexing of start and end of activity in data collection
- Interconnection with proprietary communication protocols
- Interface for production data collection using touch screen monitor with automation
- Web-based industrial supervision
- Speed charts
- Raw materials consumption
- Speed history
- Downtime register
- Performance by product type and machine
- Real-time OEE calculation



## MOBILE WAREHOUSE

- Material reception
- Automatic identification of packaging weight
- Load reception
- Material outputs to production
- Material returns from production
- Shipping
- Picking List
- Inventory
- Stock updating
- Lot division
- Location search
- Packaging search



## BALANCED SCORECARDS

- Evaluate the performance of the company
- Identify and define all business processes
- Performance indicators
- Scorecards for different perspectives
- Define processes and benchmarking

## EBUSINESS

- Estimate requests, either by customers or vendors, through Internet
- Customer data search and retrieval
- Job order status search and retrieval by customer or vendor
- Prices updating by supplier
- Purchase order status and delivery schedule forecast through Internet



## EQUIPMENT MAINTENANCE

- Increase efficiency
- Auto-repair
- Improve planning
- Increase the life cycle of equipment
- Activities that increase the equipment efficiency
- Autonomous maintenance system by operators
- Establishing a planned maintenance system
- Automatic generation of request for scheduled maintenance
- Manual or automatic programming of maintenance
- Generation of maintenance order and its analysis
- Statistics of incidents, event and problem causes

## QUALITY CONTROL

- Quality standards definition
- Definition of quality control for each sub-family
- Equipment calibration record and control
- Material quality control
- Complete nonconformity management
- Quality costing and integration with accounting

# SOLUTIONS

## ENERGY MANAGEMENT

- Real time resource information
- Supervision via web-browser of the plant layout with real time indication of energy consumption by equipment
- Statistical information about energy consumption cost other information for different periods of time
- Statistics of incidents, event and problem causes
- History of the energy cost per production cycle and time
- Comparison of cost and time per production and line
- Graphical or analytical monitoring
- Sectorial analyzes in tabular or graphical format



## ECO-EFFICIENCY

- Analysis of Mass Flow and Energy
- Environmental Performance Evaluation
- Model of Environmental Impact Calculation
- Value Calculation Model
- Consumption and emissions inventory
- Mass and energy balance for each area of study
- Identifying environmental aspects
- Identifying the eco-efficiency principles for improvement
- Calculating eco-efficiency ratio
- Determining eco-efficiency development

## WEB2PRINT

- E-commerce software solutions
- Easy and user friendly interface
- Easy to configure & manage
- Online product design
- Secure online payments
- Uploaded customer files



## BUSINESS INTELLIGENCE

- Analytics & dashboard for business users
- Analysis focused on business problems
- Analyse sales by profit margin
- Analyse the major suppliers
- Analyse Job Order costs
- Exporting dashboards to XML, CSV, PDF, MHTML, Excel, TIFF and Word files



## RDI - RESEARCH, DEVELOPMENT AND INNOVATION

- Inserting ideas to the system
- Evaluation of generated ideas
- Monitoring the status of the idea
- Downloading and uploading files attached to an innovative idea
- Support to the company in terms of regulation of RDI documents
- Providing indicators of objectives and targets
- Identifying human and financial resources involved



# MARKETS - PRINTING & PACKAGING INDUSTRY

## Sistrade for Printing & Packaging Industry

- Offset & Newspaper Printing
- Packaging Printing
- Security Printing
- Form & Envelope Printing
- Digital Printing

## Sistrade for Labels & Flexible Packaging Industry

- Flexible Packaging Printing
- Label Printing
- Plastic Extrusion Industry
- Woven Labels Industry

## Sistrade for Vertical Industries

- Publishing Industry
- Metalworking Industry
- Textile Industry
- Food Industry
- Wire & Cable Industry
- Services

## OFFSET & NEWSPAPER PRINTING

Sistrade® for offset printing responds to the needs of its implementation in the printing industry that produces commercial printing works, pamphlets, magazines, books, newspaper and other. It is a completely customizable solution with the power to be implemented according to specific needs both in terms of necessary modules or tools adjusted to the reality of every company, becoming very flexible to new specifications.

- Estimating any type of job, such as: magazines, brochures, catalogues, hardcover books, newspapers, etc.
- Settings and calculation of the paper for each copy
- Paper reel management
- Detailed calculation of job costs
- Comparison of different scenarios
- Simulation of other quantities
- Workflow for estimate approval
- Margin application and economic/financial analysis of the estimate
- Emailing estimates to the customer



## PACKAGING PRINTING

Sistrade® for packaging area, cardboard boxes, corrugated cardboard, and other common jobs in this sector. It can offer all the tools to manage companies manufacturing packaging.

Because of the specific needs of this activity sector, due to the type of production, the technical definition of the job is highly enhanced, supported by the Technical Datasheets, with the specific estimating (100% customized) by product type (different types of boxes) versus the real time production control.

- Estimate and production management of any type of boxes according to ECMA or FEFCO standards
- Imposition calculation and full optimization of imposition plan
- Selection of box type structured by type
- Definition of the paper fibre direction
- Import and management of all CAD/DXF files
- Packing of the finished products



## FORM & ENVELOPE PRINTING

- Estimates of continuous printed forms and envelope
- Automatic calculation of imposition
- Calculation of estimate costs, conveyors, web-finish and printing
- Information about the number of copies of the job
- Selection of the type of paper, ink consumption, ink sales, grammage, side (CF, CFB or CB), etc.

## DIGITAL PRINTING

- Estimating in small and large format machines
- Automatic calculation of continuous imposition plan
- Calculation of the plan with single or mixed orientation of items
- Optimization of the base material costs
- Costs & margins overview

## SECURITY PRINTING

- Receptions with supervision control
- Security protocols forms
- Encrypted Users Passwords
- Real time localization system
- Picking & packing lists
- Encrypted data transmission through Wi-Fi

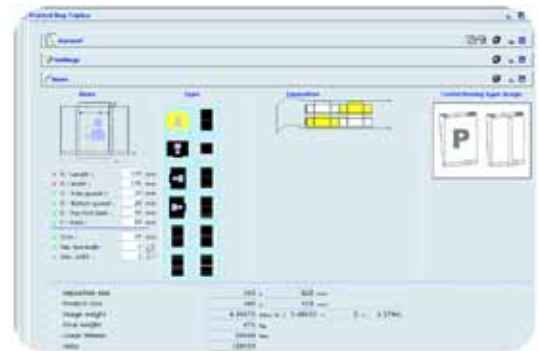


# MARKETS - LABELS & FLEXIBLE PACKAGING INDUSTRY

## FLEXIBLE PACKAGING PRINTING

Sistrade® in the range of vertical solutions for printing industry, offers a vertical solution for printing companies working in the field of flexible packaging, including flexography and rotogravure. This sector of flexible packaging industries due to the associated output format, differs from the rest of the printing industries, placing an increased emphasis on the technical sector, including technical definition of the product, combined with the specific (parameterized) estimating according to the product type (flexible packaging) versus the production control in real time.

- Specific estimating by product type Flexography and Rotogravure
- Flexible Packaging Technical Data-Sheet
- Graphical processes
- Extrusion Technical Data-Sheet
- Resin Mixture Technical Data-Sheet
- Photopolymer-plate tool



## PLASTIC EXTRUSION INDUSTRY

- Automatic data acquisition from extruder machine
- Control of raw materials consumptions and define formulation on time
- System automation detects new production
- Make quality control of each produced package
- Supervision control, performance, OEE, downtimes, productions

## LABEL PRINTING

Sistrade® offers a vertical solution for label printing industry. This vertical solution meets the needs of the printing industry operating in the area of label, shrink sleeve, tickets printing.

Sistrade® for labels includes the entire cycle from the specification of the product to its production is considered, from the early stage of commercial process, through the registration of the client order, and the control at the production level to the subsequent dispatch of the finished product.

- Cutting and engraving definition
- Setting the encoding of finished products
- Estimate of various types of labels
- Management of rolls and cylinders
- Definition of work and estimate registration
- Definition of items/management of numerations
- Printing/direct stamping
- Estimate calculation based on existing or new cutting
- Paper, lamination film and cold stamping tape consumption
- Detailed cost calculation
- Numeration management
- Scenario simulation  
(combination of cutting types and machines)
- Identification labels with printed barcodes of GS1 standard (EAN 128)
- Allows the generation of the GTIN code according to the GS1 standard for finished products which require the GS1 identification



## WOVEN LABELS INDUSTRY

- Estimating of all kinds of woven labels and ribbons: with or without woven selvedge, with or without inscription
- Automatic calculation of the number of ribbons per rapport in loom
- Setting of weaving parameters

# MARKETS - VERTICAL INDUSTRIES

## PUBLISHING INDUSTRY

- Estimates based on the sub-contractor machine plant
- Editorial technical datasheet management
- Detailed estimate cost presentation/calculation
- Workflow notifications
- Quantity simulation
- Customer and supplier price list definition:
  - Simulation for more than 1000
  - Price list validity control
  - Price list status
- Sub-contractor management
- Workflow for estimate approval
- Automatic imposition plan calculation
- Margin application and economic/financial analysis
- Documents tracking
- Editorial planning



## TEXTILE INDUSTRY

- Multi-level structure of items, customizable for every project
- Complex item trees with unlimited number of nodes and levels
- Setting operation range by product or article
- Collection and project management
- Control of raw materials per lot of articles
- Identification of semi-manufactured and finished products
- Technical datasheet of items with direct links to web-cam for product image recognition



## METALWORKING INDUSTRY

- Definition of dimensions of article features, as for example, type of steel, type of material, category, and other
- Definition of product trees, with specification of project and components of the job
- Definition of operation structure
- Include formulas in the technical datasheet
- Management of derivatives and waste
- Include the preparation, waiting and movement times in the production planning
- Serial number management

## FOOD INDUSTRY

- Graphic supervisory system of filling lines
- Real time monitoring of expected vs performed
- Automatic system for product counting
- Planning and sequencing of production orders by production line
- Counting devices in critical points of the process
- Productivity indices per shift
- Management of product technical datasheets
- Display of weekly plan in the collection stations installed on the factory floor
- Calendar with weekly records

## WIRE AND CABLE INDUSTRY

- Quality control as an integration view of systems, such as quality, environment, occupational health and safety
- Process control during all the manufacturing stages, with the register of self-control and monitoring of performance
- Full tracking of each dispatched reel

## SERVICE SECTOR

- Document Management
- Project Management
- iProcurement
- Content Management
- CRM, Workflow and MarketPlaces



# SERVICES

## IMPLEMENTATION METHODOLOGY

SISTRADE - MIPS®<sup>(1)</sup> methodology has a set of implementation and project management rules capable of minimizing the risks and optimizing the resources in the "financial, human and time" areas. More than a methodology, this is a way of life in SISTRADE, a set of rules and values intrinsic to the organization, by which all project implementations are systematized and the company objectives are guided, in the search for continuous improvement.

All activities necessary in the project, independently of who does them, are organized in a timeline, to guarantee a quiet and sustainable resolution of the tasks, based on an effective communication between the customer and SISTRADE.

<sup>(1)</sup> MIPS - Sistrade Project Implementation Methodology

## CUSTOMER CARE

In order to face the management of the implemented projects, in which the main focus is the customers satisfaction, SISTRADE has created the "Customer Care Sistrade" call centre, commonly known as CRM (Customer Care Relationship Management).

This centre is made of a set of processes organized and integrated in a business management model (Business Process Management).

The main objectives are:

- Register all contacts with the customers, in order to have the control and knowledge of the customers' information in an integrated way
- Handle customers' complaints
- Fulfil the needs of the customers in the shortest time possible
- Help keep current customers
- Guarantee customer satisfaction
- Provide training and clarify doubts after the end of project

## CUSTOMER SUPPORT



+ 351 226 153 600



+ 351 226 153 699



support@sistrade.com



crm.sistrade.com



sistrade



## OTHER SERVICES

- Consulting
- Training
- Technical Support & Maintenance
- Requirement Analysis
- ASP - Application Service Provider
- Hosting & Web Design
- Outsourcing

FOLLOW US:



**SisTrade<sup>®</sup>**  
Software Consulting, S.A.



[www.sistrade.com](http://www.sistrade.com)  
[inov@sistrade.com](mailto:inov@sistrade.com)